

Animals including humans - Knowledge Organiser – Year 4

Teeth	
Key knowledge	
To name and describe the role and function of our teeth and how we should look after them.	
Key definitions	
incisor	Eight teeth at the front of the mouth which have a straight, sharp edge and help cut up the food.
canines	Four teeth which are tall and pointed and are used to hold and tear food.
enamel	Yellowish-white hard material covering a tooth.
premolars	Eight teeth behind the canines. They are lower and bumpy and help to grind food.
molars	Twelve molars at the back of the mouth. They are big, flat teeth that also help to grind and chew.
tooth decay	When bacteria in the mouth begin to eat away at teeth.

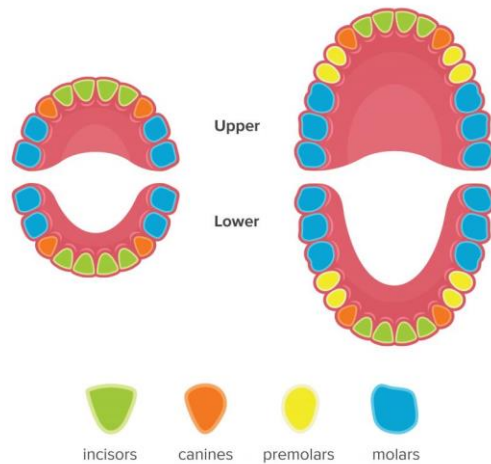
The Digestive System	
Key knowledge	
To describe the simple functions of the basic parts of the digestive system in humans.	
Key definitions	
Digestive system	This is designed to extract the goodness from food and get rid of leftovers.
nutrition	The substances that you take into your body as food and the way that they influence your health.
muscle	One of many tissues in the body that can tighten and relax to produce movement.
saliva	Saliva is mostly made of water and it helps you to chew, taste and swallow food. It contains enzymes which start to break down the food we eat.
stomach	An organ in the body where food is digested.
intestine	A long tube through which food travels from the stomach and out of the body while it is being digested.
oesophagus	The tube in the body that takes food from the mouth to the stomach.
enzymes	Special molecules in the body which act to create a chemical reaction. In the digestive system the reaction they produce breaks down food.

Food Chains	
Key knowledge	
To construct and interpret a variety of food chains, identifying producers, predators and prey.	
Key definitions	
food chain	Shows how the lives of organisms are linked in natural communities. Food chains are made up of a series of organisms that eat each other. It shows the energy transferred from one organism to another via food.
consumer	Animals that eat plants in a food chain.
predators	An animal that hunts, kills and eats other animals.
herbivores	An animal that only eats plants.
omnivores	An animal that eats both plants and meat.
carnivores	An animal that eats meat.
producer	Plants in a food chain.
prey	An animal that is hunted and killed by another for food.

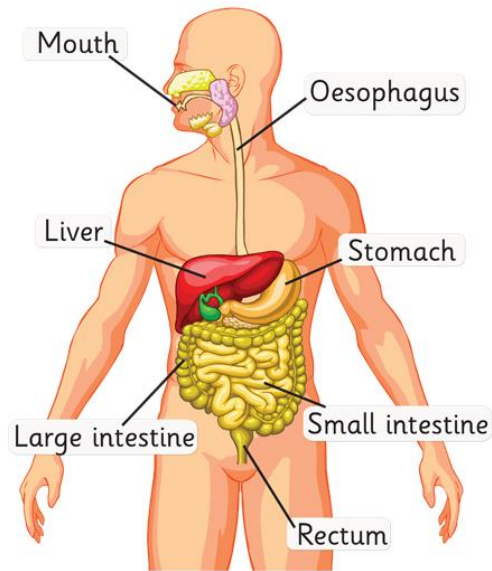
Teeth Names

Primary Teeth

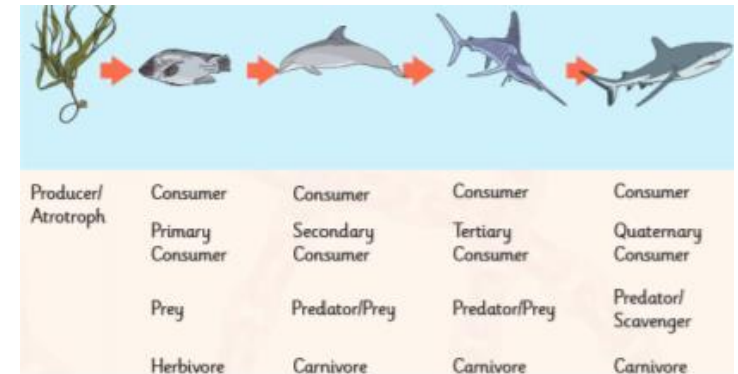
Secondary Teeth



The digestive system



Food chains



Key scientist

Pierre Fauchard (1678-1761)

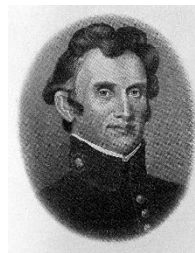


Fauchard is known as the 'Father of modern dentistry'.

Fauchard developed the skills and techniques which influence dentistry today.

Key scientist

William Beaumont (1785-1853)



Beaumont proved that digestion in the stomach is caused by a chemical reaction.

Key scientist

Al Jahiz (776-?)

Al Jahiz wrote a book called 'Kitab al-Hayawan' describing the characteristics of animals.